

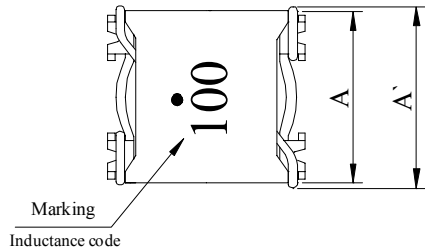
SPECIFICATION FOR APPROVAL

REF :

PAGE: 1

PROD. NAME SMD TOROIDAL POWER FILTER	ABC'S DWG NO.	ST2412□□□□L□-□□□
	ABC'S ITEM NO.	

. CONFIGURATION & DIMENSIONS :



- A : 20.96 ± 0.3 m / m
- A' : 22.00 max. m / m
- B : 23.50 ± 0.4 m / m
- C : 10.00 typ. m / m
- C' : 11.80 max. m / m
- D : 21.50 typ. m / m

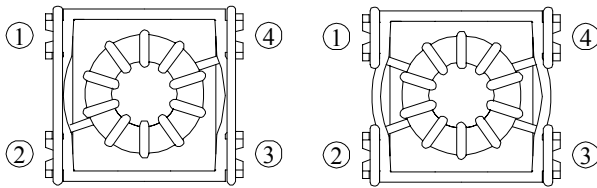
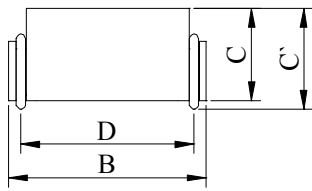
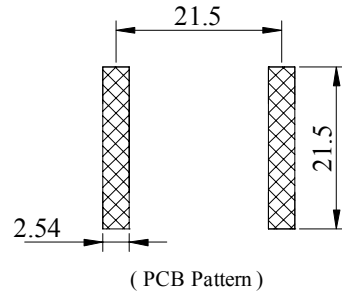


FIG. A

FIG. B



. SCHEMATIC DIAGRAM :

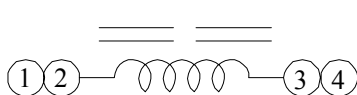


FIG. A

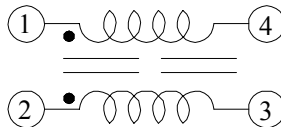
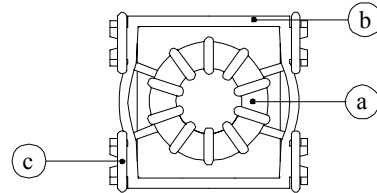


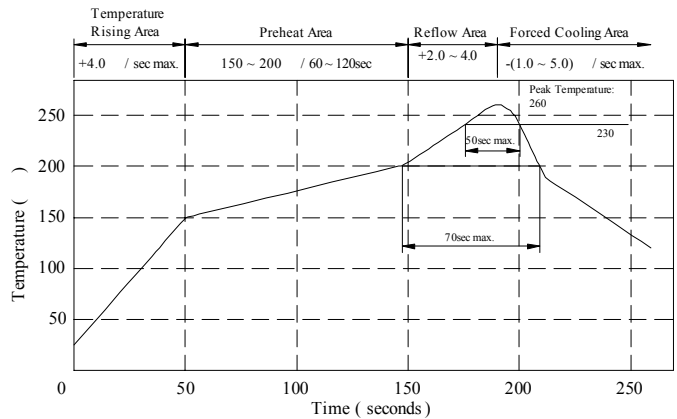
FIG. B



. MATERIALS :

- a . Core : Iron Toroidal Core
- b . Case : PPS-R7
- c . Wire : Enamelled Copper Wire (class F)
- d . Adhesive : Epoxy Resin
- e . Remark : Products comply with RoHS' requirements

Peak Temp : 260 max.
 Max time above 230 : 50sec max.
 Max time above 200 : 70sec max.



. GENERAL SPECIFICATION :

- a . Temp. Rise : 40 typ.
- b . Storage Temp. : -40 ----+130
- c . Operating Temp. : -25 ----+130
- d . Resistance To Solder Heat : 260 .10 Secs.

AR-001A

SPECIFICATION FOR APPROVAL

REF :

PAGE: 2

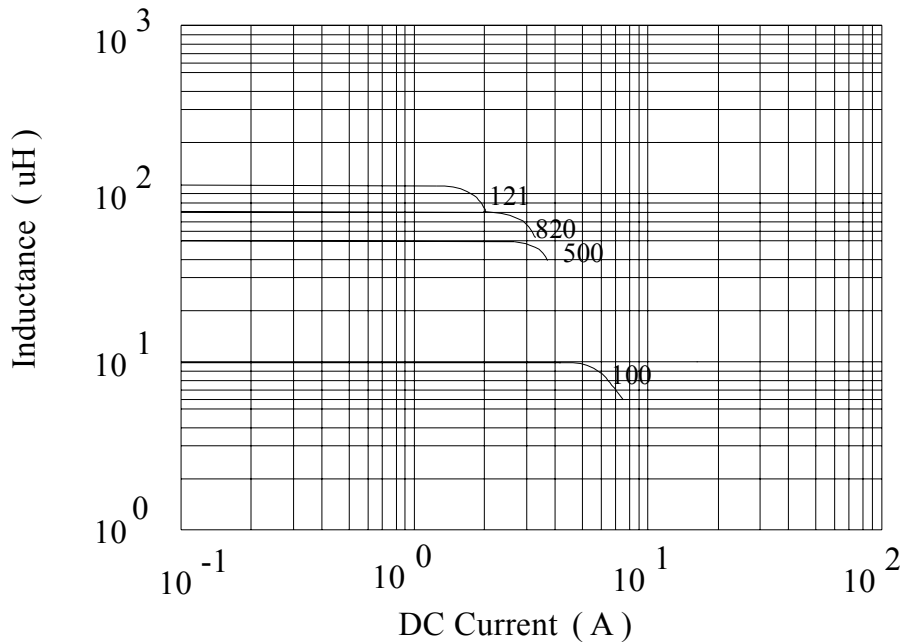
PROD. NAME	SMD TOROIDAL POWER FILTER	ABC'S DWG NO.	ST2412□□□□L□-□□□
		ABC'S ITEM NO.	

. ELECTRICAL CHARACTERISTICS :

DWG No.	Inductance @10KHz, 0.1 Vrms (μH)	RDC(mΩ) (Each Winding)		Irms(A) typ.	Isat(A) typ.	FIG.
		max.	typ.			
ST2412100ML□ -□□□	10.0 ± 20%	16.5	12.7	10.0	7.50	B
ST2412500ML□ -□□□	50.0 ± 20%	60.0	45.0	4.00	3.70	A
ST2412820ML□ -□□□	82.0 ± 20%	80.0	61.0	3.40	2.80	A
ST2412121ML□ -□□□	120.0 ± 20%	116.0	89.0	2.80	2.30	A

- 1). □ : Packaging information ... [A]: Bulk [B]: Taping Reel
- 2). "- □□□": Reference code
- 3). Irms base on Temp. rise 40 typ.
- 4). Isat base on L/L0A=30% typ.

@ Inductance VS. DC Superposition Characteristics



AR-001A



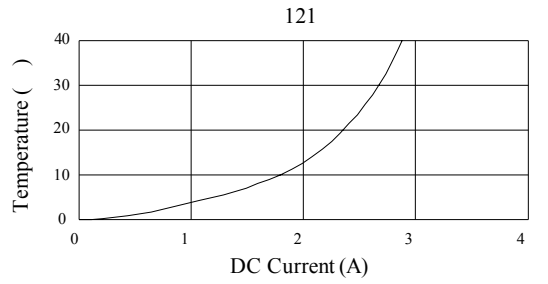
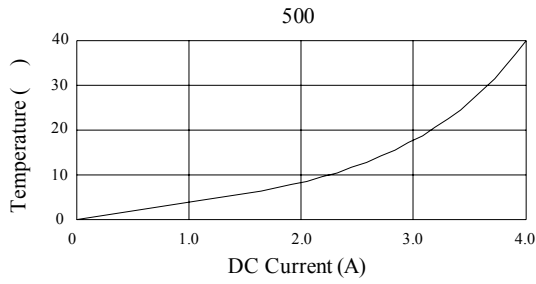
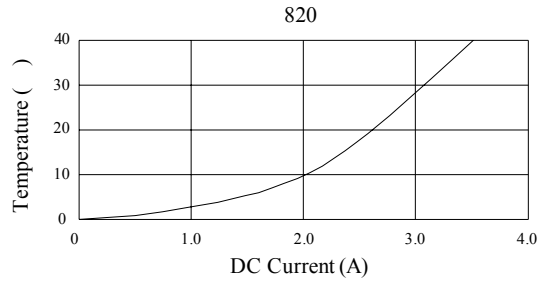
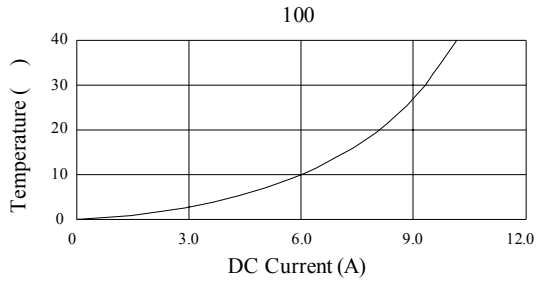
SPECIFICATION FOR APPROVAL

REF :

PAGE: 3

PROD. NAME	SMD TOROIDAL POWER FILTER	ABC'S DWG NO. ABC'S ITEM NO.	ST2412□□□□L□-□□□
---------------	---------------------------	---------------------------------	------------------

@ DC Current VS Temperature Rise



AR-001A

SPECIFICATION FOR APPROVAL

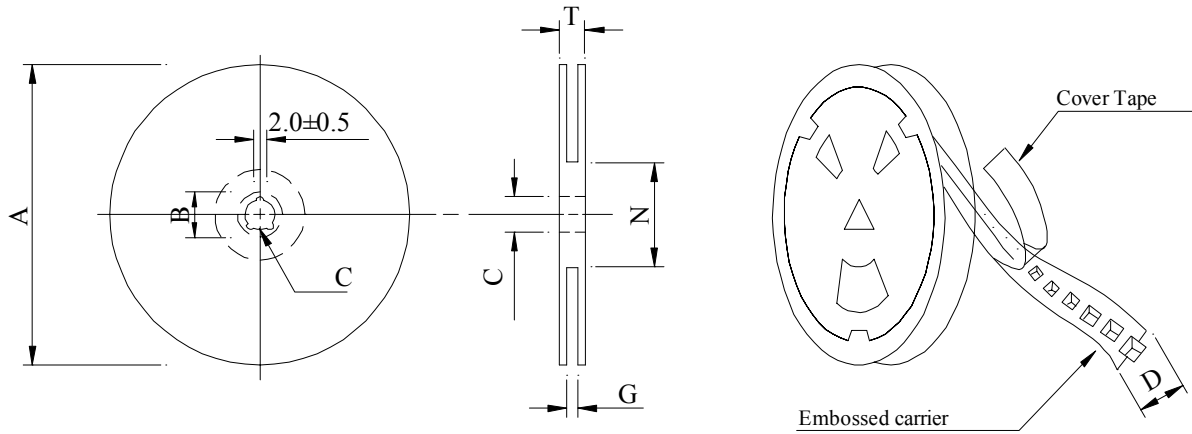
REF :

PAGE: 4

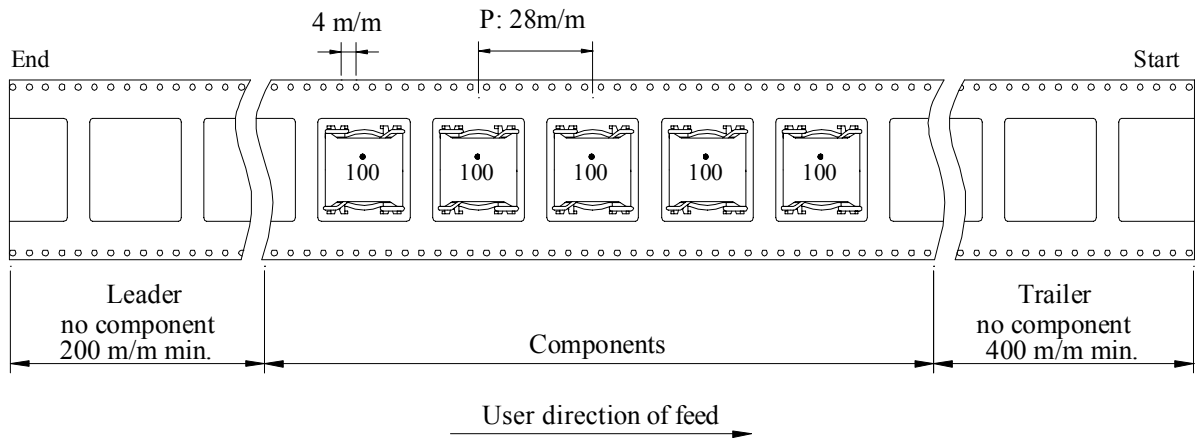
PROD. NAME	SMD TOROIDAL POWER FILTER	ABC'S DWG NO.	ST2412□□□□L□-□□□
		ABC'S ITEM NO.	

. PACKAGING INFORMATION :

(1) Configuration



Carrier tape width : D



(2) Dimensions : (m/m)

Style	A	B	C	D	G	N	T
13 - 44	330	21.0±0.8	13.0 ^{+0.5} _{-0.2}	44.0±0.3	44.4 ^{+2.0} ₋₀	100 ⁻⁰	50.4 ⁺⁰

(3) Q'TY & G.W. Per package :

Type	Inner : Reel			Outer : Carton		
	Q'TY (pcs)	G.W. (gw)	Style	Q'TY (pcs)	G.W. (kg)	Size (cm)
ST2412	100	1500	13 - 44	400	8.80	40 x 40 x 24

AR-001A

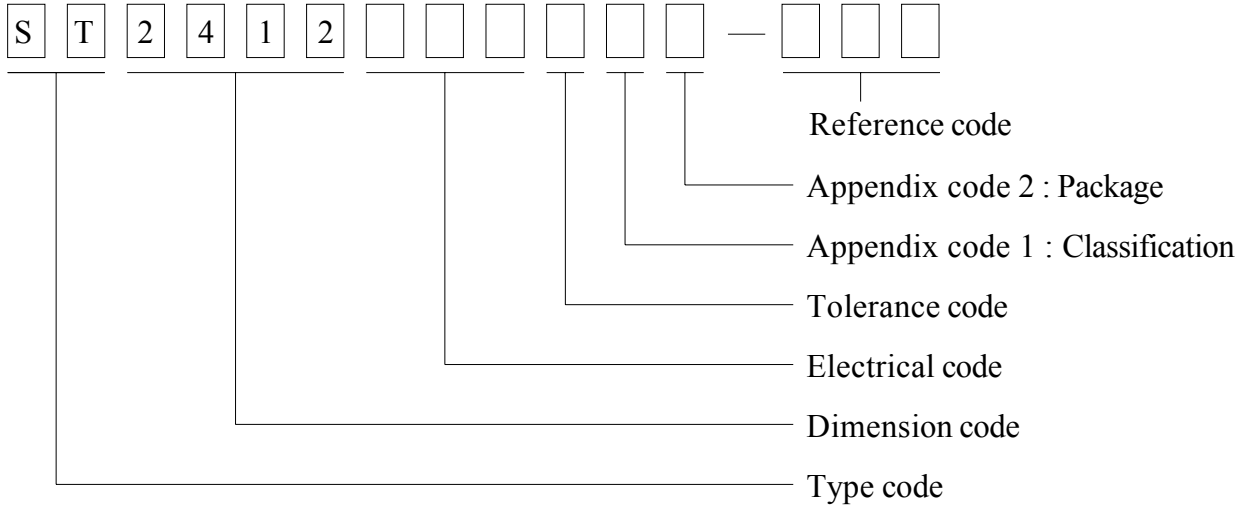
SPECIFICATION FOR APPROVAL

REF :

PAGE: 5

PROD. NAME	SMD TOROIDAL POWER FILTER	ABC'S DWG NO.	ST2412□□□□L□-□□□
		ABC'S ITEM NO.	

. DWGING NUMBER EXPRESSION :



Appendix code 1 : Product Classification

- L : Lead Free Standard products comply with RoHS' requirements
- 1 ~ 9 : Lead Free Special products comply with RoHS' requirements

Appendix code 2 : Package Information

Code	Inner Package	Inner Package Q'TY	Remark
A	T.B.D.	T.B.D.	
B	T / R (Reel Package)	100 pcs	



SPECIFICATION FOR APPROVAL

REF :

PAGE: 6

PROD. NAME	SMD TOROIDAL POWER FILTER	ABC'S DWG NO.	ST2412□□□□L□-□□□
		ABC'S ITEM NO.	

. RELIABILITY TEST :

Test item	Specification	Test condition						
Solderability	More than 95% of the terminal electrode shall be covered With fresh solder.	Preheat : 155 / 4 hours. Solder : Sn96.5 / Ag3 / Cu0.5 or equivalent Solder temp. : 235±5 Flux : Rosin Dip time : 5±0.5 seconds						
Thermal shock test (Temp. cycle)	Electrical oharacteristics shall not change more than ±20%	<table style="width: 100%; border: none;"> <tr> <td style="text-align: center;">Room temp. 15 minutes</td> <td style="text-align: center;">→</td> <td style="text-align: center;">-25 30 minutes</td> </tr> <tr> <td style="text-align: center;">Room temp. 15 minutes</td> <td style="text-align: center;">→</td> <td style="text-align: center;">+130 30 minutes</td> </tr> </table> <p>Total : 50 cycles</p>	Room temp. 15 minutes	→	-25 30 minutes	Room temp. 15 minutes	→	+130 30 minutes
Room temp. 15 minutes	→	-25 30 minutes						
Room temp. 15 minutes	→	+130 30 minutes						
Humidity test		Temperature : 40±2 Humidity : 90±5% Time : 1000 hours						
High temp. Resistance test		Temperature : 130±5 Applied current : Per spec. Time : 96 hours						

SPECIFICATION FOR APPROVAL

REF :

PAGE: 7

PROD. NAME	SMD TOROIDAL POWER FILTER	ABC'S DWG NO.	ST2412□□□□L□-□□□
		ABC'S ITEM NO.	

UL CARD :

OBMW2 September 8, 2000
Magnet Wire-Component

JUNG SHING WIRE CO LTD E174837
231 CHUNG CHENG RD, SEC 3 JEN-TEH HSIANG, TAINAN
HSIEN TAIWAN

Mtl Dsg	Mark Dsg	BC	Coat Typ	OC	ANSI Type	Temp Class
AIW	—	Polyamideimide	—	—	MW81-C	220
CFUEWB	—	Polyurethane	—	—	MW75C	130
EIAIW	—	Polyesterimide	Polyamideimide	—	MW35C	200
EILOCKY	—	Polyesterimide	Polyamide	—	—	180
EILOCKW	—	Polyesterimide	Modified Epoxy	—	—	200
EIW	—	Polyesterimide	—	—	—	220
EIW-2	—	Polyesterimide	—	—	MW74-C	200
FL EILOCKY	—	Modified Polyester	Polyamide	—	—	155
LSFFW	—	Polyurethane	—	—	MW79-C	155
LSUEW	—	Polyurethane	—	—	—	130
PEW	—	Polyester	—	—	—	155
PEY	—	Polyester	Nylon	—	MW24-C	155
SF.FLW	—	Modified Polyester	—	—	MW26C	155
SF.EIW	—	Polyesterimide	—	—	MW77C	180
SF.BY@	—	Modified Polyester	Nylon	—	MW27-C	155
SF.FLY@	—	Modified Polyester	Nylon	—	MW27-C	155
SF.BLOCKBS	—	Modified Polyester	Modified Polyamide	—	—	155
SF.EILOCKY#	—	Polyesterimide	Polyamide	—	—	180
SF.EILOCKBS	—	Polyesterimide	Modified Polyamide	—	—	180
SF.BW@	—	Modified Polyester	—	—	MW26C	155
SFFW	—	Polyurethane	—	—	MW79	155

A not-for-profit organization
dedicated to public safety and
committed to quality service

287806002 Page 1 of 2

Mtl Dsg	Mark Dsg	BC	Coat Typ	OC	ANSI Type	Temp Class
SFFY	—	Polyurethane	Polyamide	—	MW80C	155
UEW-1	—	Polyurethane	—	—	MW2-C	105
UEW-2	—	Polyurethane	—	—	—	130
UEW-4	—	Polyurethane	—	—	MW75C	130
UEY	—	Polyurethane	Nylon	—	MW28-C	130
UEY-2	—	Polyurethane	Polyamide	—	MW28-C	130

@-May be suffixed by LZ; # - May be suffixed by LZ, EL or LZI.
LZ - Signifies magened wires twisted together; EL - signifies base coated magnet wire laid parallel with top coat applied overall; LZL - signi-
fies base coated magnet wire twisted together and covered with top coat overall.

Marking: Company name or trademarks or 聚如電子 , material designation or marked designation on packaed or reel, and
Recognized Component Mark.

See General Information Preceding These Recognitions
For use only in equipment where the acceptability of the combination is determined by Underwriters Laboratories Inc.

287806002 Page 2 of 2 OBMW2E174837
September 8, 2000

AR-001A



SPECIFICATION FOR APPROVAL

REF :

PAGE: 8

PROD. NAME	SMD TOROIDAL POWER FILTER	ABC'S DWG NO.	ST2412□□□□L□-□□□
		ABC'S ITEM NO.	

QMFZ2		Wednesday, January 22, 2003									
Component-Plastics											
CHEVRON PHILLIPS CHEMICAL CO L P		E54700									
Mti Dsg	Col	Min Thk mm	UL94 Flame Class	Elec	RTI Imp	Mech Str	H W I	H A I	H V T R	D 4 9 5	C T I
Polyphenylene sulfide (PPS), glass reinforced, designated "RYTON", furnished as pellets.											
R-4-230NA	NC	0.38	V-0	130	130	130	—	—	4	5	4
		0.71	V-0	200	200	200	4	1	4	5	4
		1.5	V-0	220	200	220	0	0	4	5	4
		1.8	5VA	220	200	220	—	—	4	5	4
		3.0	V-0, 5VA	220	200	220	0	0	4	5	4
		6.0	V-0, 5VA	220	200	220	0	0	4	5	4
Report : 12/07/1982											
		Sunday, August 23, 1998									
Polyphenylene sulfide (PPS), glass reinforced, mineral reinforced, designated "RYTON", furnished as pellets.											
R-7	NC,BK,TN	0.71	V-0	200	200	200	1	0	0	5	3
		1.5	V-0	220	220	220	1	0	0	5	3
		3.0	V-0	220	220	220	1	0	0	5	3
		6.0	V-0	220	220	220	—	—	0	5	3
Report : 08/30/1983											
Underwriters Laboratories Inc. ®										984485002	

AR-001A

